



**REGIONAL SPECIALISED METEOROLOGICAL CENTRE-TROPICAL CYCLONES, NEW DELHI  
TROPICAL WEATHER OUTLOOK**

**DEMS-RSMC TROPICAL CYCLONES NEW DELHI DATED 07.12.2024**

**TROPICAL WEATHER OUTLOOK FOR THE NORTH INDIAN OCEAN (THE BAY OF BENGAL AND THE ARABIAN SEA) VALID FOR THE NEXT 168 HOURS ISSUED AT 0600 UTC OF 07.12.2024 BASED ON 0300 UTC OF 07.12.2024.**

**BAY OF BENGAL:**

Under the influence of yesterday’s cyclonic circulation over the Equatorial Indian Ocean & adjoining southeast Bay of Bengal, a Low-Pressure Area has been formed over southeast Bay of Bengal & adjoining east Equatorial Indian Ocean at 0300 UTC of today, 7<sup>th</sup> December 2024. The associated cyclonic circulation extended up to middle tropospheric levels. It is likely to move west-northwestwards, become Well-Marked Low-Pressure Area during next 24 hours. It is very likely to continue to move west-northwestwards thereafter and reach over southwest Bay of Bengal off Sri-Lanka – Tamil Nadu coasts around 11th December.

Scattered low and medium clouds with embedded intense to very intense convection lay over south Bay of Bengal and Andaman Sea. Scattered low and medium clouds with embedded isolated moderate to intense convection lay over central Bay of Bengal.

**\*PROBABILITY OF CYCLOGENESIS (FORMATION OF DEPRESSION) DURING NEXT 168 HRS:**

24 HOURS	24-48 HOURS	48-72 HOURS	72-96 HOURS	96-120 HOURS	120-144 HOURS	144-168 HOURS
NIL	NIL	NIL	NIL	NIL	NIL	NIL

**\*NOTE: EVERY 24HR FORECAST IS VALID UPTO 0300 UTC (0830 IST) OF NEXT DAY**

**ARABIAN SEA:**

Yesterday’s cyclonic circulation over southwest & adjoining southeast Arabian Sea lay over the same region at 0300 UTC of today, 7<sup>th</sup> December, 2024 and extended up to 1.5 km above mean sea level.

Scattered low and medium clouds with embedded intense to very intense convection lay over southwest Arabian Sea. Scattered low and medium clouds with embedded isolated moderate to intense convection lay over east-central & southeast Arabian Sea, Lakshadweep Islands Area, Maldives & Comorin Area.

**\*PROBABILITY OF CYCLOGENESIS (FORMATION OF DEPRESSION) DURING NEXT 168 HRS:**

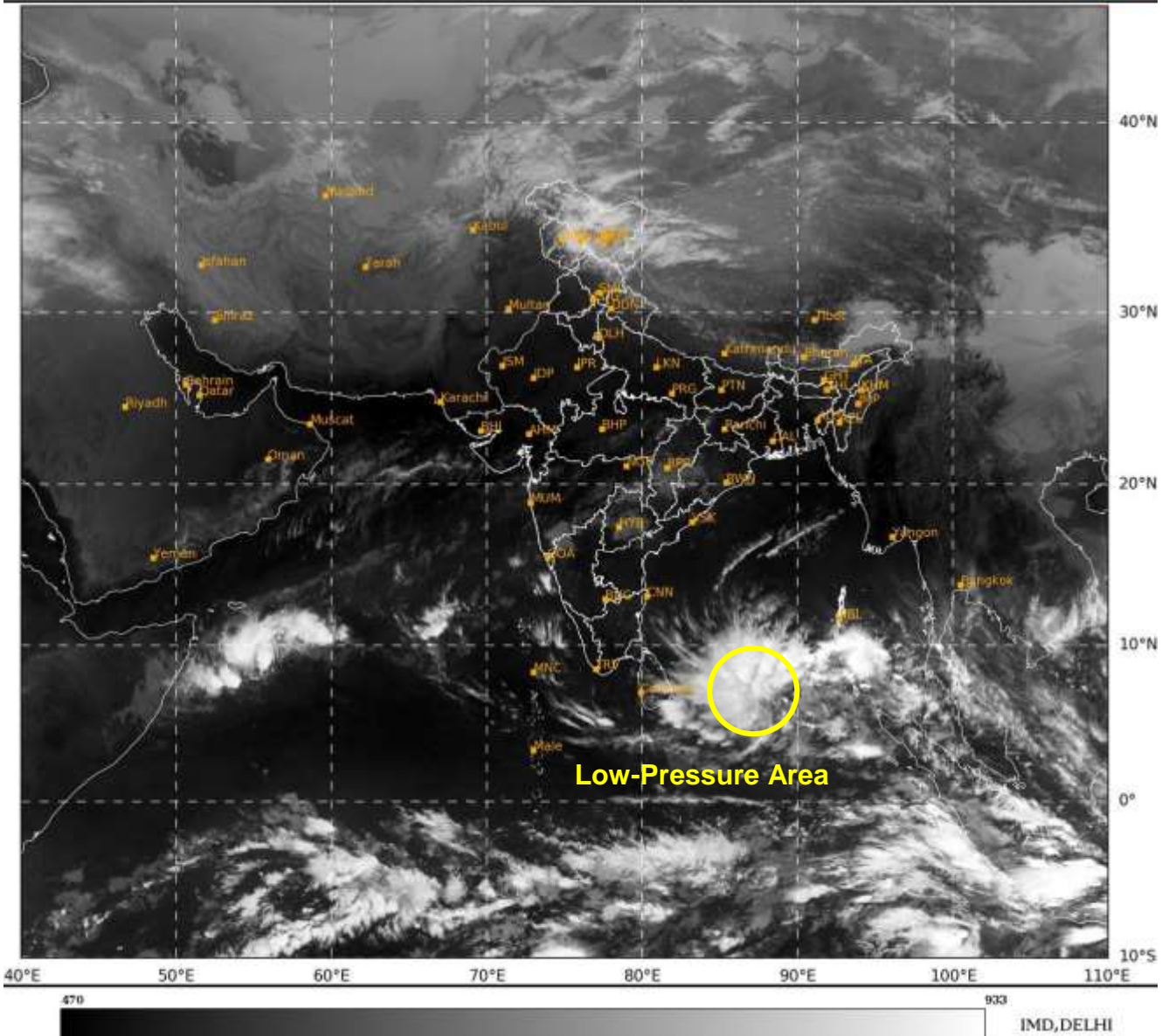
24 HOURS	24-48 HOURS	48-72 HOURS	72-96 HOURS	96-120 HOURS	120-144 HOURS	144-168 HOURS
NIL	NIL	NIL	NIL	NIL	NIL	NIL

**\*NOTE: EVERY 24HR FORECAST IS VALID UPTO 0300 UTC (0830 IST) OF NEXT DAY**

REMARKS: NIL

SAT : INSAT-3DR IMG  
IMG\_TIR2 12.0 um  
LIC Mercator

07-12-2024/(0415 to 0442) GMT  
07-12-2024/(0945 to 1012) IST



Cloud distribution: (a) Isolated: <25%, Scattered:25-50%, Broken: 51-75%, Solid:>75%, Convection Intensity: (a) Weak: Cloud Top Temperature (CTT) >-25°C, (b) Moderate: CTT: - 25°C to -40°C, (c) Intense: CTT: - 41°C to -70°C and (d) Very Intense: : Less than -70°C  
PROBABILITY OF CYCLOGENESIS (FORMATION OF DEPRESSION):NIL: 0%, LOW: 1-33%, , MODERATE: 34-66% AND HIGH: 67-100%  
This is a guidance Bulletin for WMO/ESCAP Panel Member countries. Visit respective National websites for Country specific Bulletins